



Matrix International, based in Brechin, Scotland, has over 65 years of experience in delivering high technology and cost effective engineered solutions. Matrix International is a leading designer and provider of electromagnetic clutches and brakes used in forklift trucks and servo motor brakes. Matrix International also offers world class custom design engineering and manufacturing of hydraulic clutches and brakes used in off highway and printing applications.

Customer Service

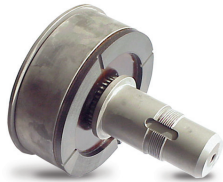
1-800-825-6544

Application Support

1-800-825-9050

www.matrix-international.com

P-1723-10-MX 7/15
Printed in USA



LWB

The LWB is an electrically applied forklift load wheel brake. It features a compact design that fits inside a load wheel, operator controlled variable torque, and zero drag torque. It is available in single disc and multi-disc versions.



ERD

The Electro-Released Dynamic brake (ERD) is a failsafe brake designed for dynamic applications. It is an on/off dry failsafe brake. It has torque capacities from 5 to 300 Nm and comes in eight different sizes.



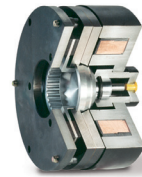
PK

The Pan-Cake (PK) range is a pre-assembled on/off dry failsafe electromagnetic brake. This failsafe brake is used for parking and emergency only. The AC motor is used in combination with the PK brake for regenerative braking of the truck.



ERD H

The ERD H is particularly suitable for ride-on trucks with high load capacity such as order pickers and pallet trucks. It has torque capacities from 20 to 100 Nm. It is activated by spring pressured hydraulic pressure proportional to the load.



ERD HBF

The ERD HBF is particularly suitable for demanding reach trucks, very high load capacity ride-on trucks and counterbalance trucks. It has torque capacities from 20 to 150 Nm. It is a parking brake actuated by spring pressure and a working brake actuated by the foot pedal.



1 EB Series

Matrix Servomotor brakes provide high torque in small space envelopes. They offer torque ratings from 1 to 4425 in. lbs.



SAE Hydraulic Brakes

Spring-applied, hydraulic released multi-disc brakes are fully enclosed making them suitable for harsh working environments and are available in wet and dry versions with static torque ranging from 500 to 14,000 (in.lbs.). These brakes are frequently used as a parking brake on lift vehicles.



1CD Spring Set Electrically Released

Caliper Brake. Up to 660 pounds clamping force. 24 to 90 volt coils available.